

Solatube International

# Celebrating 25 Years of Innovation

The Solatube story began in the 1980s when Australian inventors created a new way to bring daylight into buildings. Known as a tubular daylighting device (TDD), this product was a compact and leakproof alternative to traditional skylights. This patented device became the first Solatube product ever sold and the catalyst that revolutionized daylighting.

Since hitting the market with our first sale in 1991, Solatube International has continued to innovate with new and updated models; advanced optical technologies; daylight dimming, lighting and ventilation devices; and modular, performance-enhancing components. And there's more to come.

Browse the timeline below to see where we've been.



**1986**  
Applied for first patent



**1987**  
First prototype installed



**1991**  
First Solatube product sold  
The "light catcher" becomes the best-selling skylight in Australia.



**1992**  
Solatube entered North American market



**The Miracle Skylight® introduced**  
The first residential TDD in North America, the Miracle Skylight sells with accessories like integrated electric lighting and ventilation kits.



**1995**  
Spectralight® 2000 Tubing released  
New tubing material offers highest reflectivity for improved light transmission.



2000

**Solatube expanded into commercial market**

Introduced the Brighten Up® and SolaMaster® Series for commercial buildings.



**Patented Raybender™ Technology introduced**

Advanced optical technology that uses Fresnel lenses to increase light capture.



**Solar Star® Attic Fans debuted**

New offering provides homeowners with an affordable, energy efficient way to cool the home.



2002

**0-90 Degree Extension Tube rolled out**

Tubing maneuvers around obstacles—without compromising lighting performance.



**Spectralight® Infinity Tubing unveiled**

Industry's most reflective tubing.



2003

**Daylight Dimmer launched**

Controlled, adjustable daylighting at the press of a button.



2004

**OptiView® Diffuser introduced**

Unique optical material gives designers an option for showcasing the sky in a dazzling way.



2006

**Cool Tube Technology put into production**

Tubing with patented technology dissipates heat for maximum light with minimal heat gain.



2007

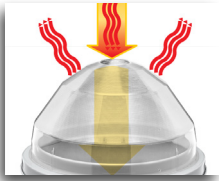
**LightTracker™ Reflector released**

Innovative in-dome reflector increases light capture for greater output.



**Raybender™ 3000 Technology introduced**

Patented daylight-capturing dome lens maximizes light capture while rejecting overpowering midday sunlight.



**2009**

**SolaMaster® Series extended with Solatube 750 DS model**

Combines Raybender 3000 for consistent light output without glare, overlighting or overheating.



**2011**

**Solatube Decorative Fixtures unveiled**

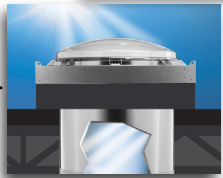
Introduces a line of stylish glass fixtures.



**2012**

**Smart LED™ System launched**

The first hybrid TDD to combine daylighting with LEDs, cutting lighting energy use by 94%.



**2013**

**SkyVault® Series debuted**

The SkyVault Series becomes the first high-output system for spaces with 18+ ft ceilings.



**SkyVault Amplifier rolled out**

Breakthrough device creates focused lighting.



**2014**

**Raybender™ HD Technology introduced**

Vertical daylight-capturing lens.



**SkyVault Collector launched**

Oversized collector features Raybender HD and LightTracker Technologies to increase low-angle light capture.



**2015**

**Solatube Systems sold in 122 countries worldwide.**



**Thermal Insulation Panel launched**

Add-on dramatically reduces thermal exchange to surpass U-factor requirements.